



Inkjet Explainers

Inkjet and Media Compatibility Explained

Tuesday, December 15, 2020

Evaluate. Optimize. Grow.

© Inkjet Insight LLC all rights reserved

[#inkjetexplainer](#)



Elizabeth Gooding
Elizabeth@inkjetinsight.com

Our explainers for today



Mary Schilling
Mary@inkjetinsight.com



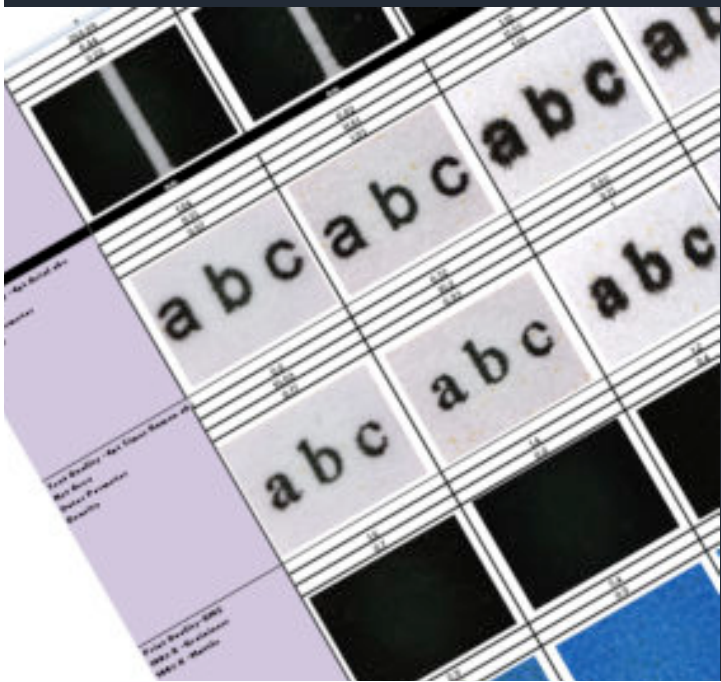
#inkjetexplainers

Get the most from your time with us!

- **SEND US YOUR QUESTIONS DURING THE WEBINAR**
- Question control is in the lower left corner
- We may answer during the presentation
- There is a Q&A at the end
- **Video and audio archive will be uploaded later today along with PDF of slides**

What does compatibility mean?

3 Flavors of Compatible



1

Running through
the press

2

Running through
finishing

3

Meeting
measurable
performance
characteristics

What is the compatibility challenge?

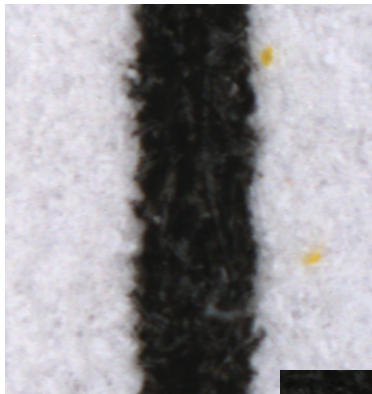
Keeping ink from diving into porous materials

Making ink stick to non-porous materials

Drying ink without damaging media

Porous Materials. Here's the challenge.

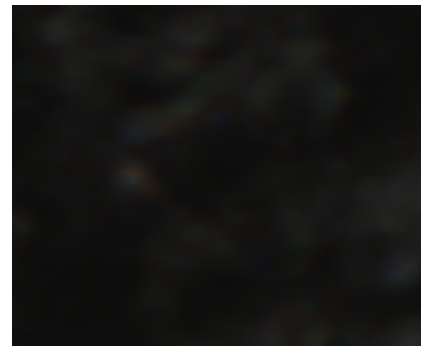
Edge Clarity



Text Clarity

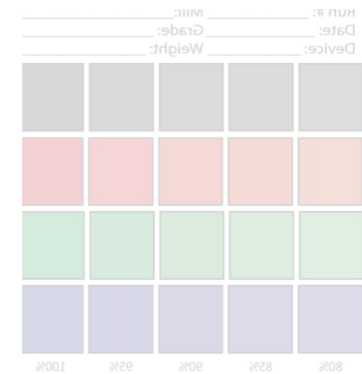
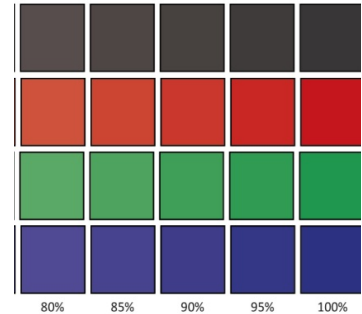


Mottle



Strike Through

Run #: _____ Mill: _____
Date: _____ Grade: _____
Device: _____ Weight: _____



Evaluate. Optimize. Grow.

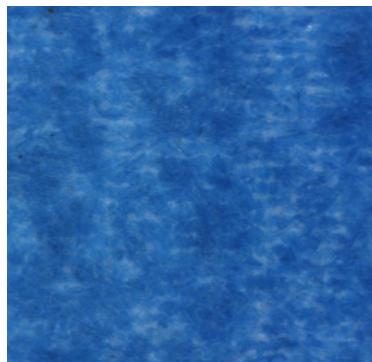
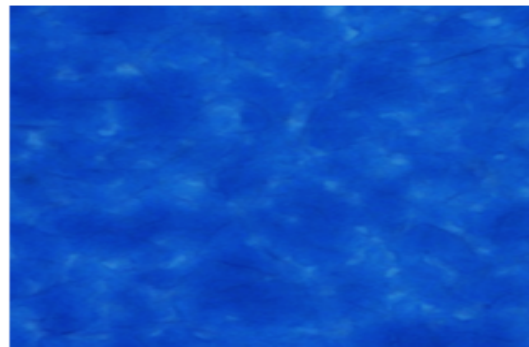
© Inkjet Insight LLC all rights reserved

Non-Porous Materials. Here's the challenge.

Color to Color Bleed

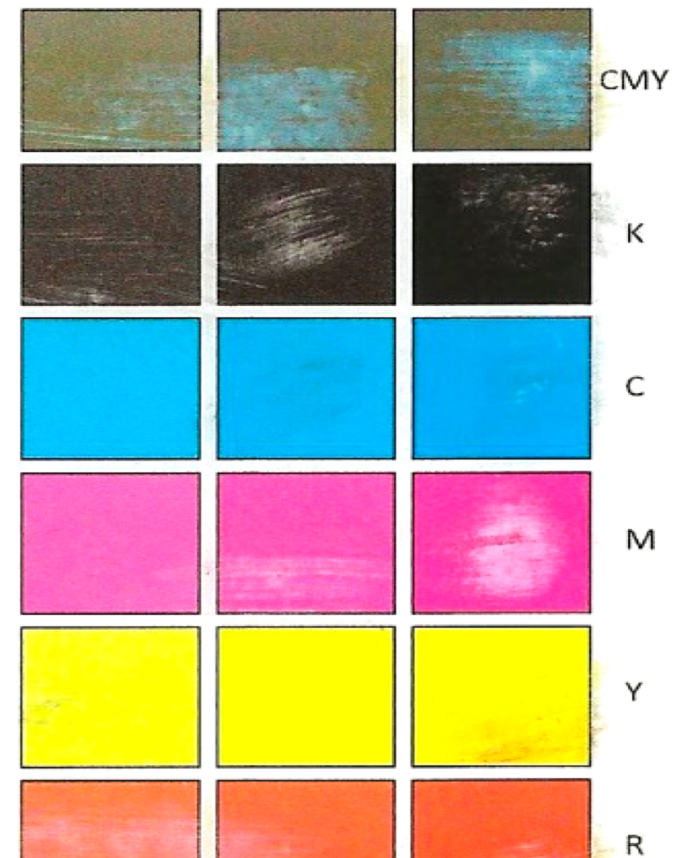


Coalescence



Non-Uniformity

Adhesion

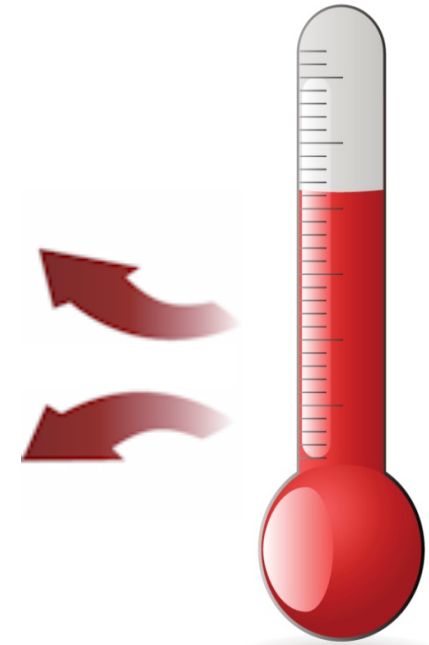


Evaluate. Optimize. Grow.

© Inkjet Insight LLC all rights reserved

Fun Fact about Aqueous Ink on Paper

Printed Ink on **Uncoated** paper responds faster to heat settings than flow.



Printed Ink on **Coated** paper responds better to increased air flow than higher temperature.

Evaluate. Optimize. Grow.

© Inkjet Insight LLC all rights reserved

Fun Fact about Aqueous Ink on Paper



Leaving a hard shell with tacky ink underneath.



Causing adhesion and rub-off issues

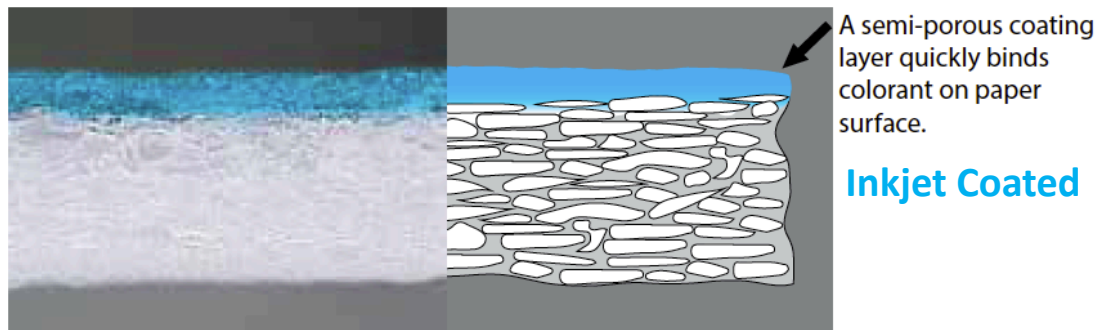
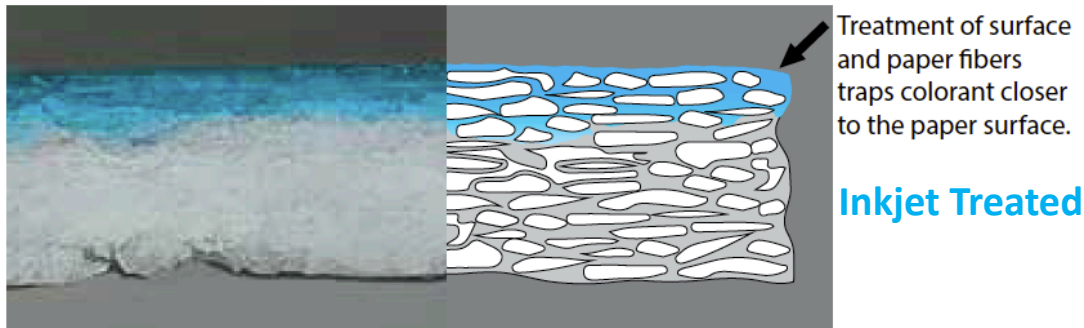
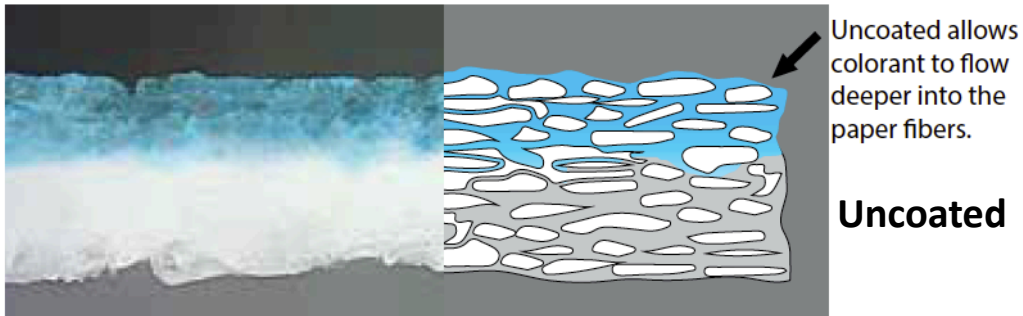
Evaluate. Optimize. Grow.

© Inkjet Insight LLC all rights reserved

How do OEMs and mills do it?

There's more than one way to get results





Evaluate. Optimize. Grow.

© Inkjet Insight LLC all rights reserved

Scanning Electron Microscopy (SEM) Cross Section Scan 3 Papers, Aqueous Inks

Fluids Drive Compatibility

- Inkjet Formulated Papers
 - Treated
 - Coated
- Priming fluids
 - Anilox applied
 - Jetted

Ink formulation drives compatibility

Colorant

Carrier

Humectants

Solvents

Resin

VISCOSITY



Evaluate. Optimize. Grow.

© Inkjet Insight LLC all rights reserved

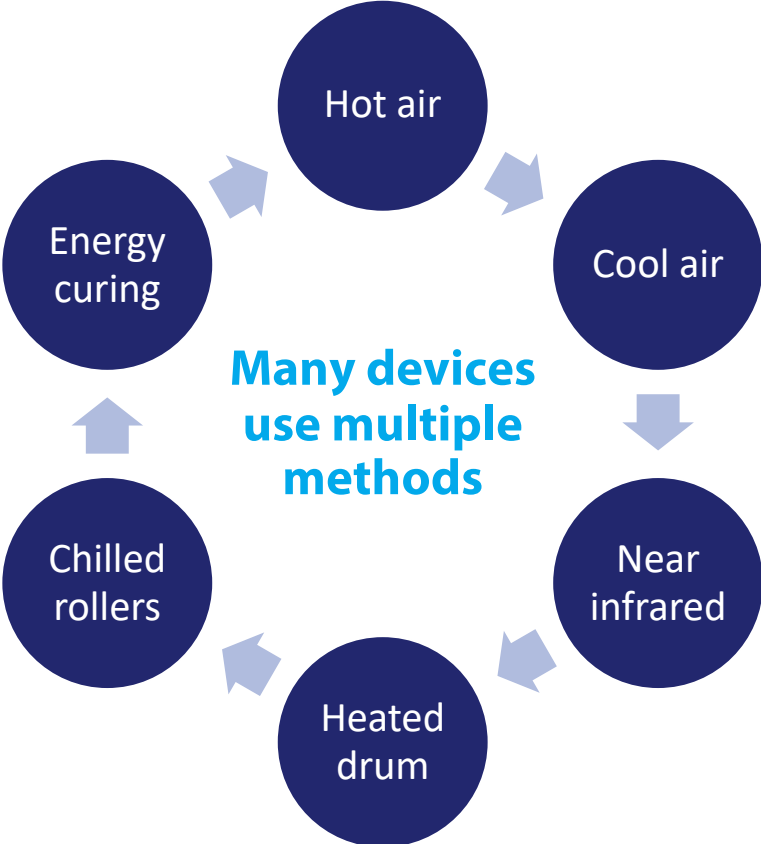
There is no single best answer

	PROS	CONS
Inkjet formulated papers	Performance tuned for inkjet	Higher media cost Limited media range
Anilox priming/coating	Wider media range Use only when needed	Additional cost More fluid to dry
Jetted priming/coating	Wider media range Less fluid than anilox	Additional cost More fluid to dry Not optional like anilox
UV /energy cured inks	Very wide media range More durable	More expensive ink Speed limitations
“Sticky,” polymer inks (primer independent)	Very wide media range More durable	More expensive ink (but less than UV)

Evaluate. Optimize. Grow.

© Inkjet Insight LLC all rights reserved

Advanced drying improves compatibility

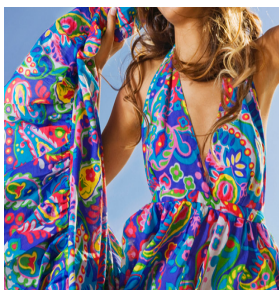


Evaluate. Optimize. Grow.

© Inkjet Insight LLC all rights reserved

What is Inkjet compatible with?

That depends on the device



Evaluate. Optimize. Grow.

© Inkjet Insight LLC all rights reserved



DO MORE
 More than just a bank.

Statement of Account
 October 1 to November 1, 20XX

Activity summary

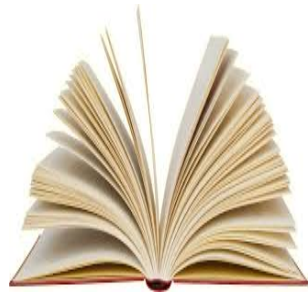
Account	Balance	Debit	Credit	Ending Balance
Bank Account 0000	111.00	0.00	0.00	111.00
Bank Checking 0003	1270.70	570.20	800.10	700.60
Money Market 0004	13,500.00	0.00	0.00	13,500.00

0000 - Share Account

0003 - Bank Checking

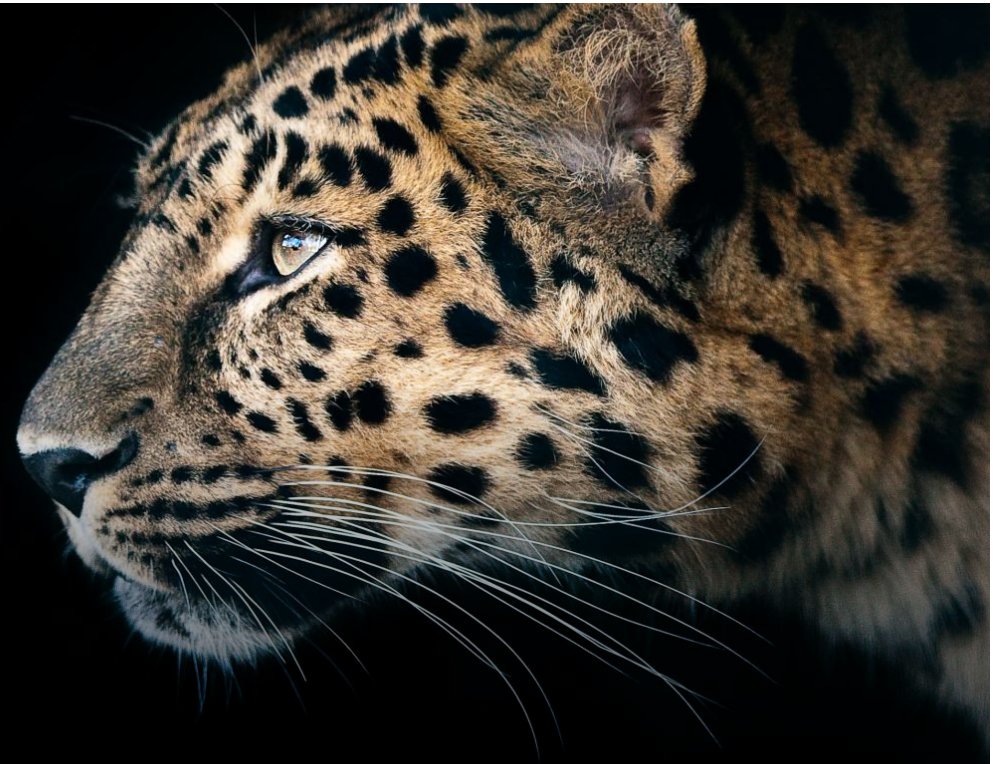
Ref	Date	Description	Amount	Balance
0001	01/01	Initial deposit	111.00	111.00
0002	01/15	Withdrawal	50.00	61.00
0003	02/01	Deposit	100.00	161.00
0004	02/15	Withdrawal	20.00	141.00
0005	03/01	Deposit	150.00	291.00
0006	03/15	Withdrawal	30.00	261.00
0007	04/01	Deposit	200.00	461.00
0008	04/15	Withdrawal	40.00	421.00
0009	05/01	Deposit	300.00	721.00
0010	05/15	Withdrawal	60.00	661.00
0011	06/01	Deposit	400.00	1061.00
0012	06/15	Withdrawal	80.00	981.00
0013	07/01	Deposit	500.00	1481.00
0014	07/15	Withdrawal	100.00	1381.00
0015	08/01	Deposit	600.00	1981.00
0016	08/15	Withdrawal	120.00	1861.00
0017	09/01	Deposit	700.00	2561.00
0018	09/15	Withdrawal	140.00	2421.00
0019	10/01	Deposit	800.00	3221.00
0020	10/15	Withdrawal	160.00	3061.00
0021	11/01	Deposit	900.00	3961.00
0022	11/15	Withdrawal	180.00	3781.00

Get a look back bonus of 10%...
 Move your balance and save big



Evaluate. Optimize. Grow.

© Inkjet Insight LLC all rights reserved



Inkjet is moving FAST!





#inkjetexplainers

Upcoming Explainers

- January - Understanding Ink Estimating
- February - Inkjet Head Technology Explained
- March - Understanding Inkjet Paper Qualification

Questions?

Inkjet Insight provides valuable tools and resources to help companies objectively **evaluate** the potential of inkjet for their business, **optimize** their operations and **grow** their businesses using production inkjet.

Our Message to Printers, OEMs and the Industry at Large
**Evaluate. Optimize. Grow.
Repeat**



Need something explained?
Let us know.

For more information please contact:

Elizabeth Gooding

elizabeth@inkjetinsight.com

Mary Schilling

Mary@inkjetinsight.com

Thank you for your time and attention.

We look forward to the opportunity to help you reach new customers through valuable technical and educational content and to grow your business through market analysis and expert media qualification support.